

Wireless Antenna
WX-RP921

Operating Instructions

RAMSA



Panasonic®

Before attempting to connect or operate this product,
please read these instructions completely.



CAUTION

RISK OF ELECTRIC SHOCK
DO NOT OPEN



CAUTION:
TO REDUCE THE RISK OF ELECTRIC SHOCK, DO NOT REMOVE COVER (OR BACK). NO USER SERVICEABLE PARTS INSIDE.
REFER SERVICING TO QUALIFIED SERVICE PERSONNEL



SA 1965

The lightning flash with arrowhead symbol, within an equilateral triangle, is intended to alert the user to the presence of uninsulated "dangerous voltage" within the product's enclosure that may be of sufficient magnitude to constitute a risk of electric shock to persons.



SA 1966

The exclamation point within an equilateral triangle is intended to alert the user to the presence of important operating and maintenance (servicing) instructions in the literature accompanying the appliance.

The serial number of this product may be found on the side of the unit.

You should note the serial number of this unit in the space provided and retain this book as a permanent record of your purchase to aid identification in the event of theft.

Model No. _____

Serial No. _____

WARNING:

TO PREVENT FIRE OR SHOCK HAZARD, DO NOT EXPOSE THIS APPLIANCE TO RAIN OR MOISTURE.

READ THE FOLLOWING INSTRUCTIONS BEFORE USE

CAUTION:

It is a violation of Federal Law to begin operating this system prior to obtaining an FCC Radio License.

The FCC ID number for this radio equipment is listed below.

FCC ID : ACK9TAWX-RP921

CONTENTS

PREFACE	2
FEATURES	2
PRECAUTIONS	2
BEFORE INSTALLATION	3
MAJOR OPERATING CONTROLS AND THEIR FUNCTIONS	4
INSTALLATION	5
MOUNTING BRACKET	6
SPECIFICATION	6
ACCESSORY	7

PREFACE

The Wireless Antenna WX-RP921 is designed to be used with the Diversity Receivers WX-RP810/WX-RP820 and Distributor WX-RP900. It is equipped with a built-in down converter from 800MHz to 260MHz to minimize cable loss.

FEATURES

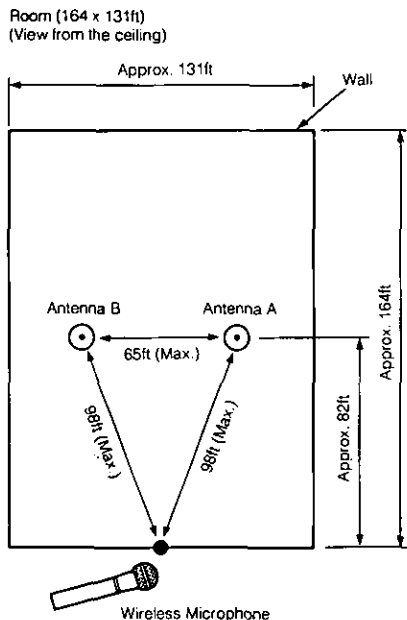
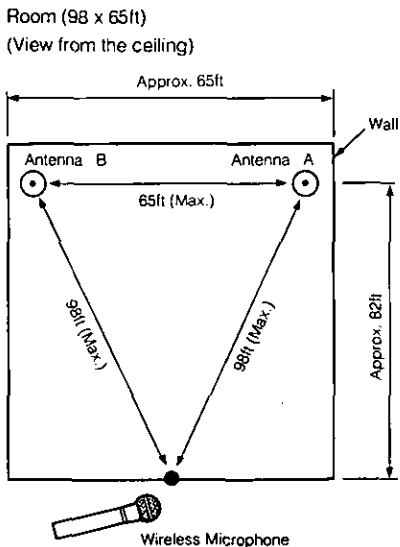
- The WX-RP921 includes a pre-amp which boosts the antenna signal to compensate for coaxial cable loss between the antennas and diversity receivers WX-RP810/WX-RP820. It prevents disruption of the voice signal due to squelch and a reduction in the signal-to-noise ratio caused by dead points.
- A phantom power supply system is employed to supply DC power from the Diversity Receivers WX-RP810/WX-RP820 or Distributor WX-RP900 to the Wireless Antenna WX-RP921 via a coaxial cable.

PRECAUTIONS

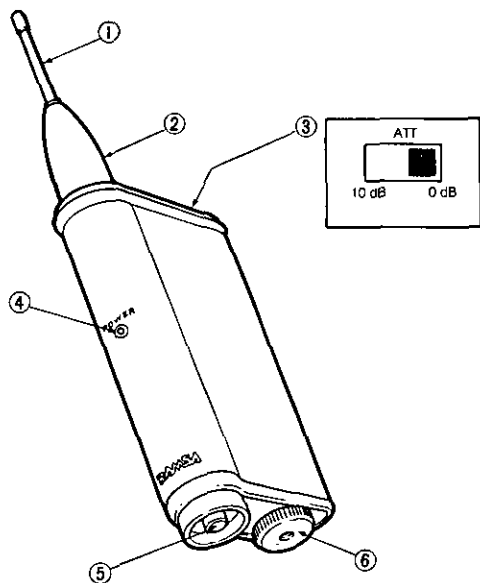
- The Wireless Antenna WX-RP921 is designed for indoor use. Do not install it outdoors.
- Always install the wireless antenna with mounting bracket (provided) vertically.
- Do not place the receiving antenna in places affected by strong electrical or magnetic fields, such as near AC power lines, motors, transformers or generators.
- Do not place the wireless antenna near metallic materials, as the receiving sensitivity of wireless antenna will be reduced.
- Place the wireless antennas between 16.7ft (5m) and 66ft (20m) apart from each other for the best diversity effect.
- Do not place the wireless microphone less than 6.7ft (2m) apart from wireless antenna. Otherwise interference noise will occur.
- Always use high quality cable. Low grade cable will cause signal loss and interference.
- Always install the wireless antenna as a pair.

BEFORE INSTALLATION

- The distance between wireless microphone and wireless antenna is changed according to environment of installation place.



MAJOR OPERATING CONTROLS AND THEIR FUNCTIONS



(1) Antenna

(2) Cover

Remove the cover when change the position of Attenuator selection switch.

(3) Attenuator Selection Switch (ATT 0dB/10dB)

0dB: Normally used this position.

10dB: When the antenna input level is high or interference noise produced, set the Attenuator selection switch to this position.

(4) Power Indicator (POWER)

Lights in red when the power is supplied from the receiver or distributor.

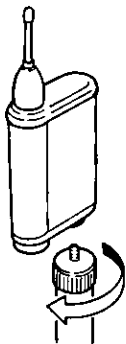
(5) Output Connector

Connect the coaxial cable between this connector and the antenna input connector of diversity receiver or distributor.

(6) Screw Adaptor

INSTALLATION

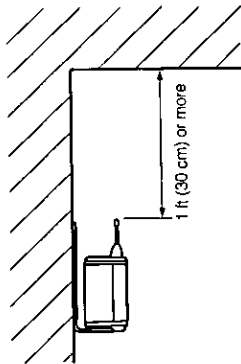
- **Mounting the wireless antenna on the microphone stand**
 1. Install the WX-RP921 on the microphone stand base and turn it to clockwise.



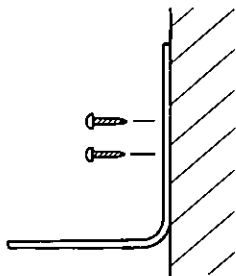
- **Mounting the wireless antenna on the wall with mounting bracket**

Caution:

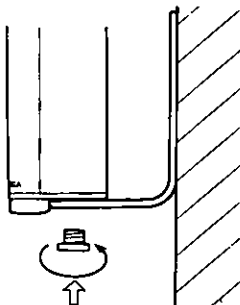
Do not install the antenna horizontally or upside-down. Install the wireless antenna at least 1 ft (30 cm) below the ceiling



1. Mount the mounting bracket(provided) on the wall with 2 screws or 4 screws.

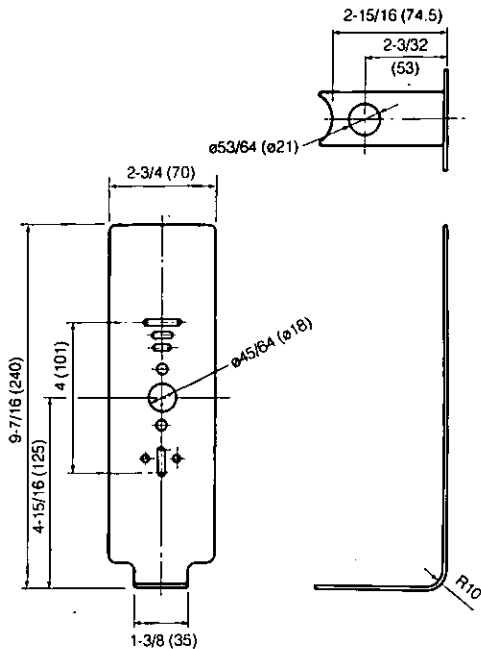


2. Mount the wireless antenna to the mounting bracket and tighten the screw adaptor.



MOUNTING BRACKET

Dimensional Drawing (Unit : inches (mm))



SPECIFICATIONS

Power Source	: Supplied from Diversity Receivers WX-RP810 or WX-RP820 or Distributor WX-RP900, 12V DC
Power Consumption	: 60mA
Receiving Frequency	: 797MHz to 803MHz
Conversion Gain	: 27dB
Ripple	: Less than 3dB
Output Impedance	: 75 ohms
Antenna	: 1/4 Wavelength Whip Antenna
Dimensions	: 2-15/16"(W) X 5-7/8"(H) X 1-1/4"(P)
(Excluding Antenna)	75(W) X 150(H) X 32(P) mm
Weight	: Approx.0.73lbs(330g)

Dimensions and weight indicated are approximate.
Specifications are subject to change without notice.

ACCESSORY

Mounting Bracket 1pc

Panasonic

Broadcast & Television Systems Company

Division of Matsushita Electric Corporation of America

RAMSA/Professional Audio Systems

Executive Office: One Panasonic Way, Secaucus, New Jersey 07094
6550 Katella Ave. Cypress, CA 90630 (714) 373-7277

N0693-0

YWA8QA2971AN

Printed in Japan

Ⓝ 22